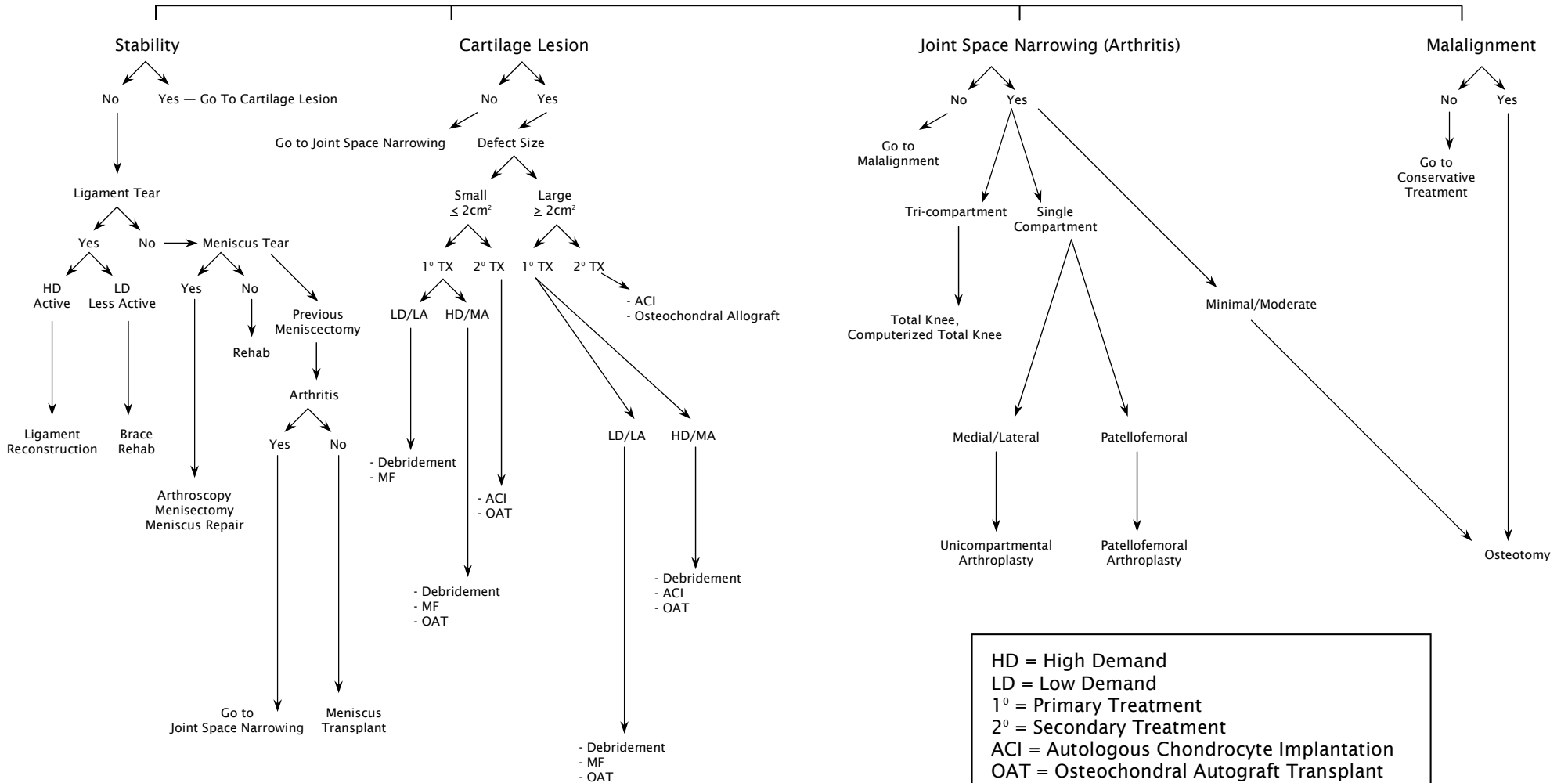


KNEE SYMPTOMS (*pain, catching, swelling, giving way*)

No - Conservative Treatment (NSAID's, Rehab, Injection)

Yes

X-ray and/or MRI



HD = High Demand
LD = Low Demand
1° = Primary Treatment
2° = Secondary Treatment
ACI = Autologous Chondrocyte Implantation
OAT = Osteochondral Autograft Transplant
MF = Microfractures
NSAID = Nonsteroidal Anti-inflammatory Drug